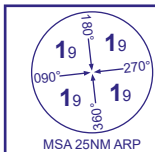


INSTRUMENT APPROACH CHART - ICAO

JERSEY RNP

RWY 26

(ACFT CAT A,B,C,D)

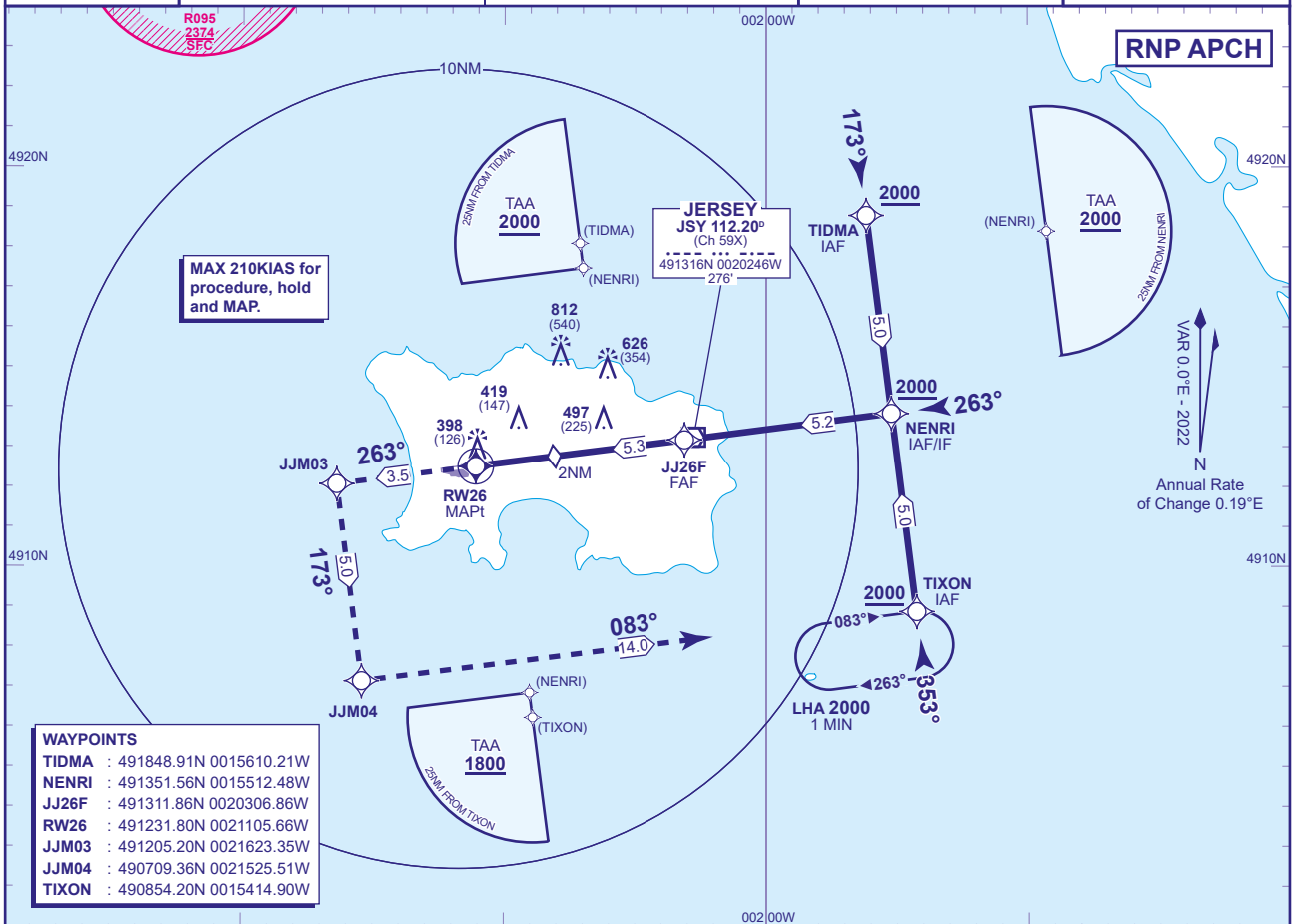


ATC	125.205, 120.450
APP	120.305, 118.555
TWR	119.455
	121.905
ATIS	134.680

JERSEY CONTROL
JERSEY APPROACH
JERSEY TOWER
JERSEY GROUND
JERSEY INFORMATION

AD ELEVATION	277
THR ELEVATION	272
OBSTACLE ELEVATION	812 AMSL (540) (ABOVE THR)
BEARINGS ARE MAGNETIC	

EGNOS	CH 63839 E26A
MIN TEMP	-5°C
TRANSITION ALTITUDE	5000



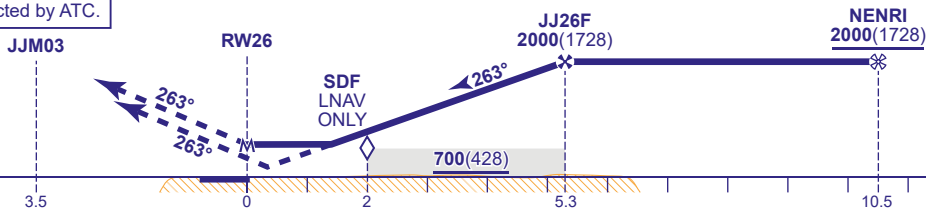
RECOMMENDED PROFILE LPV/VNAV Vertical Path Angle 3.0°(LNAV 5.24%), 320FT/NM

NM to RW26	5	4	3	2 (SDF)	1
ALT(HGT)	1910(1638)	1600(1328)	1280(1008)	960(688)	640(368)

TCH 52

MAPt (LNAV): RW26

Continuous climb to 3000. Initially climb straight ahead to JJM03 then turn left to JJM04 and TIXON to join the hold or as directed by ATC.



Aircraft Category		A	B	C	D	Rate of descent	G/S KT	160	140	120	100	80
		LPV	472(200)	472(200)	472(200)	472(200)	FT/MIN	850	740	640	530	430
OCA (OCH)	LNAV/VNAV	580(308)	580(308)	580(308)	580(308)							
	LNAV	652(380)	652(380)	652(380)	652(380)							
	Total Area	770(493)	770(493)	1210(933)	1210(933)							
VM(C)OCA (OCH AAL)	South of RWY 08/26	770(493)	770(493)	1030(753)	1030(753)							

NOTE Aircraft will normally be required to hold not lower than 3000.

CHANGE (5/25): TAA ALTITUDES REVISED.